

# ELKHORN'S BELOW AVERAGE RATES

In this case being below average is a good thing. Each year, the US Energy Information Administration releases the average price for residential electricity for the United States - graphic to the right. The average price for electricity increased from 2020 - 2021 by \$0.05, which is a large jump from the last several years. In Nebraska, the average cost of residential electricity has remained steady. For Elkhorn, the average residential rate for 2021 was \$0.098, which is a penny lower than the state average and almost \$0.04 lower than the national average. In an economic climate of prices increasing, ERPPD is decreasing its rates.

We are able to do this by finding efficiencies and having good financial stewardship and passing that on. As reported in the December 2022 *Wire*, we were able to take another 2% rate decrease in overall electric rates for 2023. That is a 6 % rate decrease over two years.

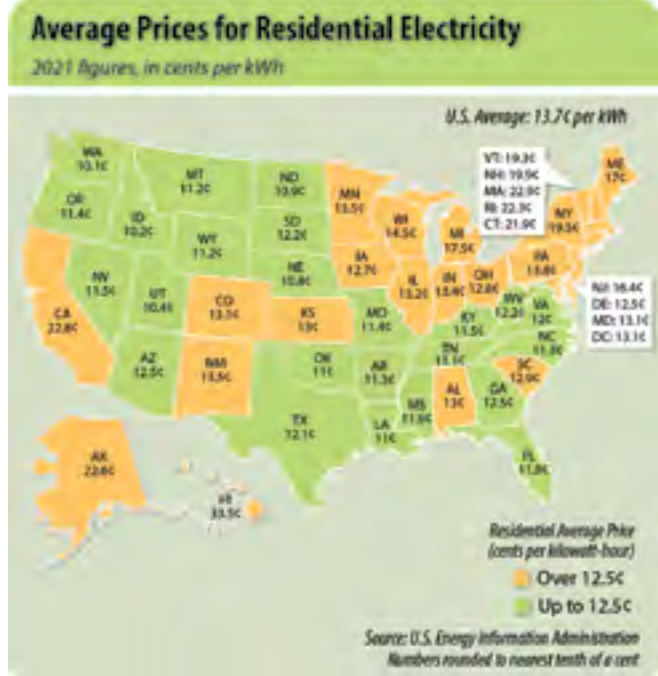
Because there have been no general rate increases over the previous nine years, your electric rate is lower than it was 10 years ago.

Each customers' usage pattern, as well as weather, will impact individual power bills each month.

You can learn about ways you may be able to save on your individual electric bill, by visiting our website at <https://erppd.com> and clicking on the energy tab. There you will find the EnergyWise™ energy efficiency incentives that can help you save money when you purchase more efficient appliances or upgrade your insulation or heating/cooling system.

You will also see the "Energy Audit" link. There you can learn about energy basics, be able to conduct a virtual energy assessment of your home, and use different calculators - see graphics to the right. These resources can help you to determine where you might be able to be more efficient and decrease some of your usage to help you to save more on your electric bill.

If you have any questions about the above, please call the office at 402-675-2185 and ask for Brian.





# GENERATOR SAFETY

With proper use and maintenance, portable generators can provide great convenience during an outage. However, when generators are used incorrectly, they can be extremely hazardous. In a 2022 report, the Consumer Product Safety Commission estimated 85 U.S. consumers die every year from carbon monoxide (CO) poisoning caused by gasoline-powered portable generators.

Here are 10 do's and don'ts to keep in mind when using portable generators:

1. DO: Install backup CO alarms.
2. DO: Keep children and pets away from portable generators at all times.
3. DO: Position generators at least 25 feet outside the home, away from doors, windows and vents that can allow CO to enter the home.
4. DO: Ensure your generator is properly grounded. Use a portable ground fault circuit interrupter (GFCI) to prevent electric shock injuries.
5. DO: Use three-pronged extension cords that are rated to handle the load of the generator. Inspect extension cords for cuts, frays or other damage before use.
6. DON'T: Operate a generator inside your home or an enclosed (or partially-enclosed) space. Generators produce high levels of CO, which can be deadly.
7. DON'T: Open windows or doors while the generator is



*Position portable generators at least 25 feet outside the home, away from doors, windows and vents that can allow CO to enter the home. Photo Source: Honda*

running.

8. DON'T: Rely on generators as full-time source of power. They should only be used temporarily or in emergency situations to power essential equipment or appliances.

9. DON'T: Overload generators. They should only be used to power essential equipment. Make sure your generator can handle the load of the items you plan to power.

10. DON'T: Connect generators



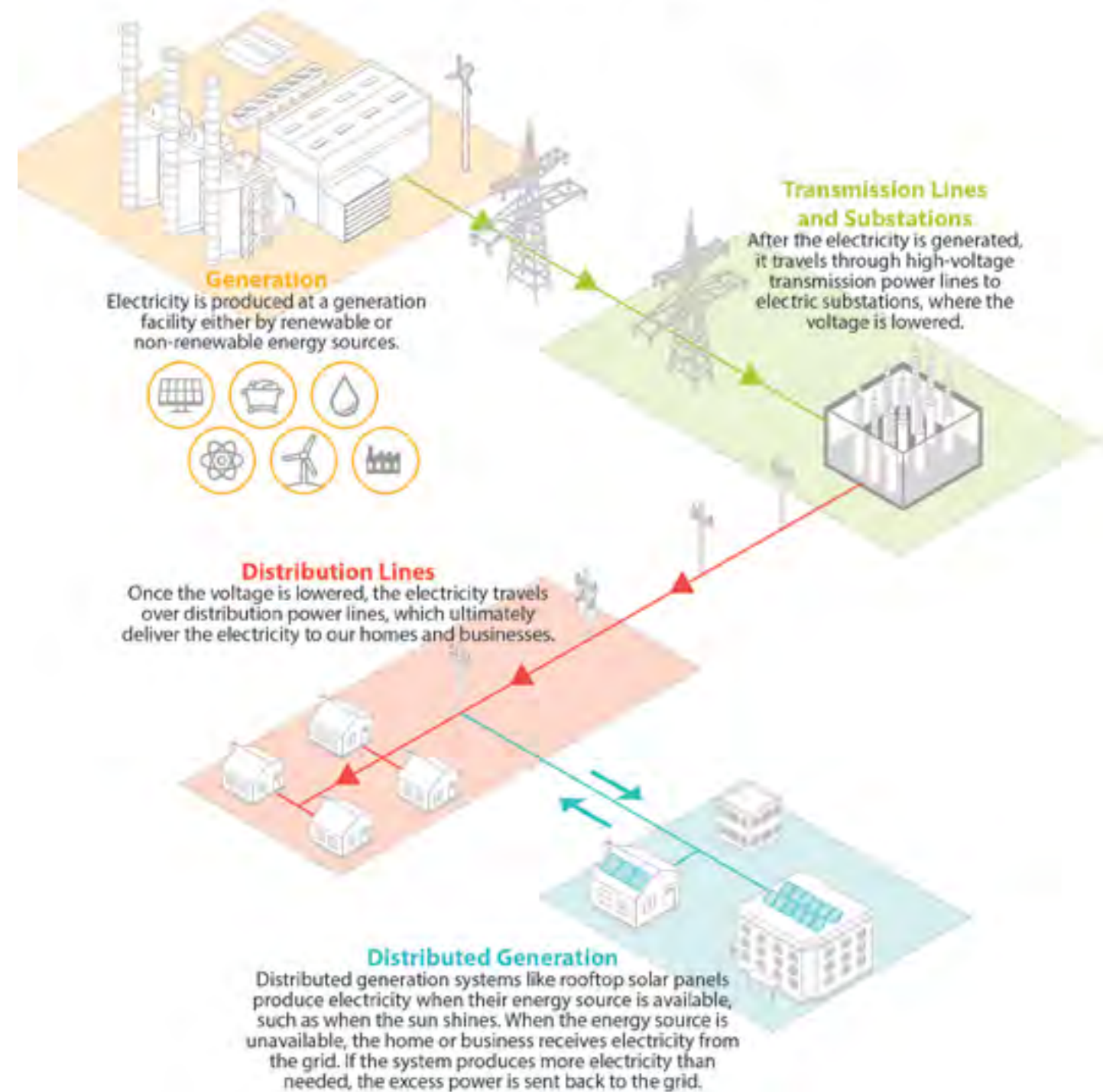
*Before you operate a portable generator, be sure to thoroughly read the owner's manual for important safety information and tips. Photo Source: Honda*

directly into household wiring unless you have an appropriate transfer switch installed. If a generator is connected to a home's wiring without a transfer switch, power can backfeed along power lines and electrocute utility lineworkers making repairs.

While generators provide convenience during power outages, they can quickly become hazardous—even deadly—if improperly operated. Before you operate a portable generator, be sure to thoroughly read the owner's manual for important safety information and tips.

(Source: NRECA StraightTalk Safety Article by Abby Barry. Abby Barry writes on consumer and cooperative affairs for the National Rural Electric Cooperative Association, the national trade association representing more than 900 local electric cooperatives. From growing suburbs to remote farming communities, electric co-ops serve as engines of economic development for 42 million Americans across 56% of the nation's landscape.)

# HOW ELECTRICITY REACHES YOU





**July 9 - 13, 2023**  
 High school students, grades 9 - 11  
 Camp Comeca, Cozad, Neb.

**WIN A FREE TRIP TO WASHINGTON, D.C.**

Three campers will be selected to serve as Nebraska's Ambassadors to the National Rural Electric Cooperative Association's Rural Electric Youth Tour in 2024.

The Nebraska Rural Electric Youth Energy Leadership Camp (YELC) is not your usual camp.

YELC is a great opportunity for youth in high school to experience what it is like to be involved with their electric power utility, while having a lot of fun, meeting new people and learning leadership skills.

Campers also tour Gerald Gentleman power station, participate in fun activities like games and swimming. There is a talent show and on the last night there is a dance.

Who should attend?

Any 9-12 grade high school student who is served by ERPPD and

- \*with leadership potential;
- \*with an awesome personality;
- \*strong academic record and,
- \*an interest in meeting new people. Apply today!



**2023 ERPPD ENERGY LEADERSHIP CAMP APPLICATION FORM**

Return to : Elkhorn Rural Public Power District, c/o Stacie Young, PO Box 310, Battle Creek, NE 68715  
 (Entry Deadline April 12, 2023)

Name \_\_\_\_\_

Address \_\_\_\_\_

Parents' or Guardian's Name \_\_\_\_\_ Phone Number \_\_\_\_\_

School \_\_\_\_\_ Age \_\_\_\_\_ Grade \_\_\_\_\_

**COMPLETE THE SHORT PARAGRAPH BELOW:**

Why I would like to attend the 2023 Youth Energy Leadership Camp at Comeca Camp and Retreat Center, Cozad NE, July 9-13, as a representative of Elkhorn Rural Public Power District.

\_\_\_\_\_

\_\_\_\_\_

\_\_\_\_\_

\_\_\_\_\_

\_\_\_\_\_

\_\_\_\_\_