



# THE WIRE



CURRENT NEWS FROM THE ELKHORN RURAL PUBLIC POWER DISTRICT

February 2023

Serving the Elkhorn River Valley since 1940

Volume 32, Number 2

## PAUL LICHTY RETIRES



After 29 years with ERPPD, Paul Lichty, journeyman lineman, retired on December 30, 2022.

Paul started with ERPPD on August 30, 1993. He ran the digger truck for most of his tenure here.

Paul liked to ask questions, promote safety and work with the coop students and apprentices, showing them the ropes.

Paul is pictured to the left with his retirement cake during the staff celebration on Dec. 30th.

Paul is looking forward to spending his retirement with his grandchildren.

We wish Paul the very best on the next stage of his journey.



*Pictured right, top: Paul is pictured in 2005 with other safety committee members left to right; Wayne McCormick, Bill Seifert, Ryan Kittelson and Dave Hrabanek. ERPPD was recognized by the Nebraska Safety Council for outstanding performance within their safety programs with a “Peak Performance Award”. This award can still be seen today in the front office.*

*Right, middle: Paul uses the remote to position the auger.*

*Right, bottom: Paul gives apprentice lineman, Chris Bentley, some tips on using the remote.*

# ENERGY EFFICENCY

## Residential Heat Pump Efficiency Ratings Have Changed

The minimum efficiency ratings have changed, so if you are planning a new home or upgrading your heating and cooling system, please work with your contractor on the new standards.

The standards and incentives for each system are listed below.

You can visit erppd.com under the energy tab for all the current energy efficiency incentives along with applications and more information on guidelines for each of the incentives.

Please call the office at 402-675-2185 and ask for Brian if you have any questions about the energy efficiency incentives.

Type of Heat Pump	Incentive Criteria (SEER Ratings)	Incentive Criteria (SEER 2 Ratings)	Incentive Amount
Ductless Mini-Split	16+ SEER, 12.5 EER, 8.5 HSPF	16+ SEER2, 12.5 EER2, 7.7 HSPF2	\$400
Ductless Mini-Split	Variable Capacity (inverter driven) *	Variable Capacity (inverter driven) *	\$600
Ductless Mini-Split (multi heads, 3 ton or greater)	Variable Capacity (inverter driven) *	Variable Capacity (inverter driven) *	\$1,200
Air Source	15-15.9 SEER, 12.5 EER, 8.5 HSPF	Not available after 2023	\$400
Air Source	16-16.9 SEER, 12.5 EER, 8.5 HSPF	15.2-16 SEER2, 11.9 EER2, 7.5 HSPF2	\$400
Air Source	17-18.9 SEER, 12.5 EER, 8.5 HSPF	16.1-18 SEER2, 11.9 EER2, 7.5 HSPF2	\$800
Air Source	19+ SEER, 12.5 EER, 8.5 HSPF	18.1+ SEER2, 11.9 EER2, 7.5 HSPF2	\$1,200
Air Source	Variable Capacity (inverter driven) *	Variable Capacity (inverter driven) *	\$1,200
Geothermal – water-to air or water-to water (1 or 2 Stages)	Any EER	Any EER	\$2,400
Geothermal – water-to air or water-to water (variable capacity)	35+ EER, 5.0+ COP (in GLHP – partial load column of AHRI or Energy Star certificate)	35+ EER, 5.0+ COP (in GLHP – partial load column of AHRI or Energy Star certificate)	\$3,300

\*Provide documentation that shows manufacturer, model number and that states the equipment is "inverter driven".



### 5 Ways to Save During Winter

Winter weather typically means increased energy use at home. Keep your bills in check with these tips to save energy—and money!

**Mind the thermostat.** If you have a traditional heating and cooling system, set the thermostat to 68 degrees or lower. Consider a smart or programmable thermostat for additional savings.

**Get cozy.** Add layers of clothing for additional warmth, and snuggle up under your favorite heavyweight blanket.

**Don't block the heat.** If your air vents or heating elements (like radiators) are blocked by furniture or rugs, your home isn't being adequately heated.

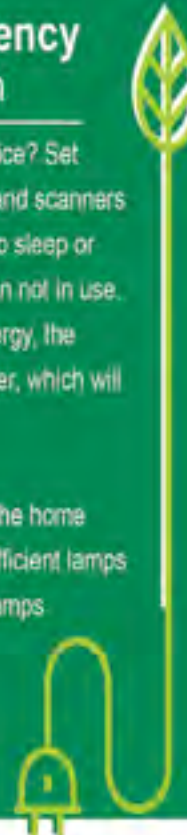
**Take advantage of sunlight.** Open window coverings during the day to let natural sunlight in to warm your home. Close them at night to block the chilly night air.

**Block air leaks.** Seal windows and exterior doors with caulk and weather stripping to improve indoor comfort and decrease the amount of energy used to heat your home.

### Energy Efficiency Tip of the Month

Do you have a home office? Set equipment like printers and scanners to automatically switch to sleep or energy-saver mode when not in use. In addition to saving energy, the equipment will stay cooler, which will help extend its life.

Another way to save in the home office is to use energy efficient lamps for task lighting. Small lamps use less energy than whole-room lighting.




## Prevent Electric Shock

Use all electrical devices away from the sink, tub, toilet and shower. GFCI outlets should be installed near any water source.

Safe Electricity.org

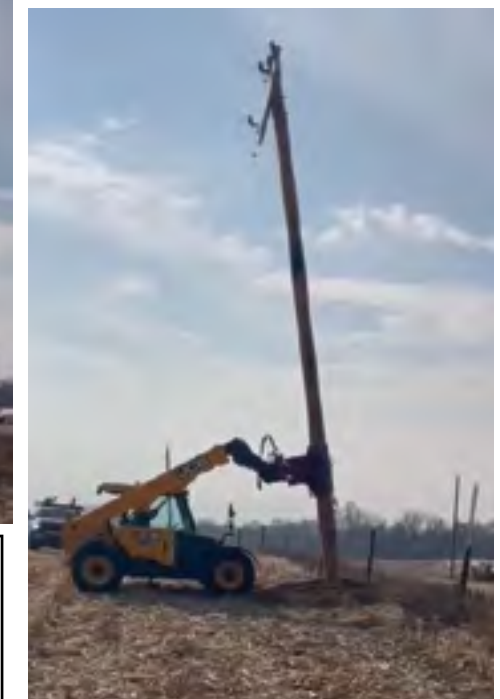
## Prevent Electric Shock

According to the U.S. Fire Administration, faulty home electrical wiring causes 26,000 residential fires a year, hundreds of deaths, and thousands of injuries. Unfortunately, electrical hazards often go unaddressed until it is too late.

Here are some simple tips to help you prevent electric shock in your home.

- Use care when using appliances near sinks and other water sources and check your GFCIs monthly.
- Check electric outlets for loose fitting plugs, and missing or broken wall plates.
- Check that appliance cords are not frayed and the plugs are cracked or damaged.

Just a few simple things can help you make your home safer.



Utilizing smaller equipment, like a telehandler, saves crews time and wear and tear on larger more expensive equipment like a digger derrick. While not for every situation, having this equipment gives crews a lot of flexibility in how to do the work, like setting poles - pictured here.

# 205 YEARS OF SERVICE CELEBRATED



**Chris Sovereign**  
*Mechanic  
Battle Creek  
5 years*



**Jason Lyon**  
*Journeyman Lineman  
Battle Creek  
15 years*



**Jeremy Holecek**  
*Journeyman Lineman,  
Battle Creek  
20 years*



**Dominic Smedra**  
*Journeyman Lineman,  
Battle Creek  
20 years*



**Brian Suckstorf**  
*Energy Services Rep.  
Battle Creek  
20 years*



**Jared Suckstorf**  
*Journeyman Lineman,  
Battle Creek  
20 years*



**Ryan Kittelson**  
*Journeyman Lineman,  
Neligh  
25 years*



**Teresa Schwarting**  
*Customer Service Rep.,  
Battle Creek  
30 years*

## Board of Directors



**Dennis Kuchar**  
*Director  
25 years*



**Rod Zohner**  
*Director  
25 years*

## Safety Committee



**Blake Papik**  
*Journeyman Lineman  
2 years*



**Kevin Zohner**  
*IT Specialist  
2 years*

*Pictured above are the staff and directors that were recognized for their milestone service anniversaries for 2022 at the annual Awards Banquet held in January. Those serving on the safety committee were also recognized. The dedication and service of the employees and directors is greatly appreciated!*