

THE WIRE

CURRENT NEWS FROM THE ELKHORN RURAL PUBLIC POWER DISTRICT

December 2020 Serving the Elkhorn River Valley since 1940 Volume 29, Number 12

“CHANGE” ADDS UP TO BLESSINGS



With all the stress and negativity that has been generated by COVID 19 and the elections, it is pleasant to see something positive and uplifting. To the right is a thank you letter from S.M.I.L.E. You can see the blessing that your “change” has made for that organization

and the families they serve. Pictured below is Patty Prauner and Sunshine.

The Operation Round Up program is a way for customers to bless and have a positive impact on area organizations and communities all year long. The change you give by rounding up your monthly bill results in big blessings for the organizations and communities that receive the funds.

Below are also the recipients for the 4th and final round of funding for 2020. Eligible organizations can apply for funding each year. Please see www.erppd.com/community_fund for more information and an application. First quarter applications for funding in 2021 are due Monday, January 18.



Pictured left: Patty Prauner, Program Director for S.M.I.L.E. with Sunshine, a pony being trained for the S.M.I.L.E. program, helping children and adults with disabilities.

S.M.I.L.E. INC.

Stephanie's Miracles In Loving Equine

November 7, 2020

ERPPD Community Development Fund
Jennifer Adams, HR Specialist
P.O. Box 310
Battle Creek, Nebraska 68715

Dear Board of Trustees and ERPPD Customers who have Rounded Up:

THANK YOU! THANK YOU!

GOD IS GOOD! He continues sending helping hands (yours) to keep His S.M.I.L.E. program helping families with special needs children and adults. (See S.M.I.L.E. riders on our [S.M.I.L.E.Inc.Facebook.com](https://www.facebook.com/S.M.I.L.E.Inc) and our webpage smilehorsetherapy.org). The letters from the parents tell you best what you are providing for your community and surrounding communities. The letters are in our newsletter sent out in February.

We are buying younger horses now, because they are cheaper, but than need more training. I found a P.O.A. pony last fall and on June 15th we had a surprise. We call her Sunshine. This is a little too young. Her training started the day she was born and hopefully in four years we will have a great S.M.I.L.E. therapy pony.

Thank you for being on the S.M.I.L.L.E. TEAM!

Wishing you all a Happy Thanks Giving and a Merry Christmas!

God's Blessings!

Patty

Patty Prauner, Program Director
S.M.I.L.L.E. INC.

Patty Prauner • Program Director
54646 832nd Rd • Madison, NE 68748 • (402) 675-8462

Community Development Fund Requests and Awards (November 2020)

Organization	Project	Area Served	Amount Awarded
Battle Creek VFD	Upgrade Equipment	Battle Creek	\$1,000.00
Briggs and Barrett Project	Nursery of Home - Musical Park	Norfolk	\$1,000.00
Camp Willow	Camp for Children with Disabilities	Norfolk	\$1,000.00
City of Madison	Youth Recreation Program	Madison	\$1,000.00
Madison Public Library	Literacy Bags	Madison	\$500.00
S.M.I.L.L.E.	Scholarships/Maintenance	Madison	\$1,000.00
TeamMates of Summerland	Background Checks/Activities	Orchard	\$500.00
Toys for Tots	Christmas Presents for Area Children	Norfolk	\$1,000.00
TOTAL			\$7,000.00

First Quarter	Application Deadline January 18, 2021	Board Meeting Date: February 1, 2021
----------------------	--	---

Elkhorn Rural Public Power District

will be closed

Friday, Dec. 25, Christmas Day

and

Friday, January 1, New Year's Day

PUBLIC POWER PROCESS

Thank you to those that took the time to vote in the November general election.

There was historical turn out for this election - 78.62% in Antelope County and 70.70% in Madison County.

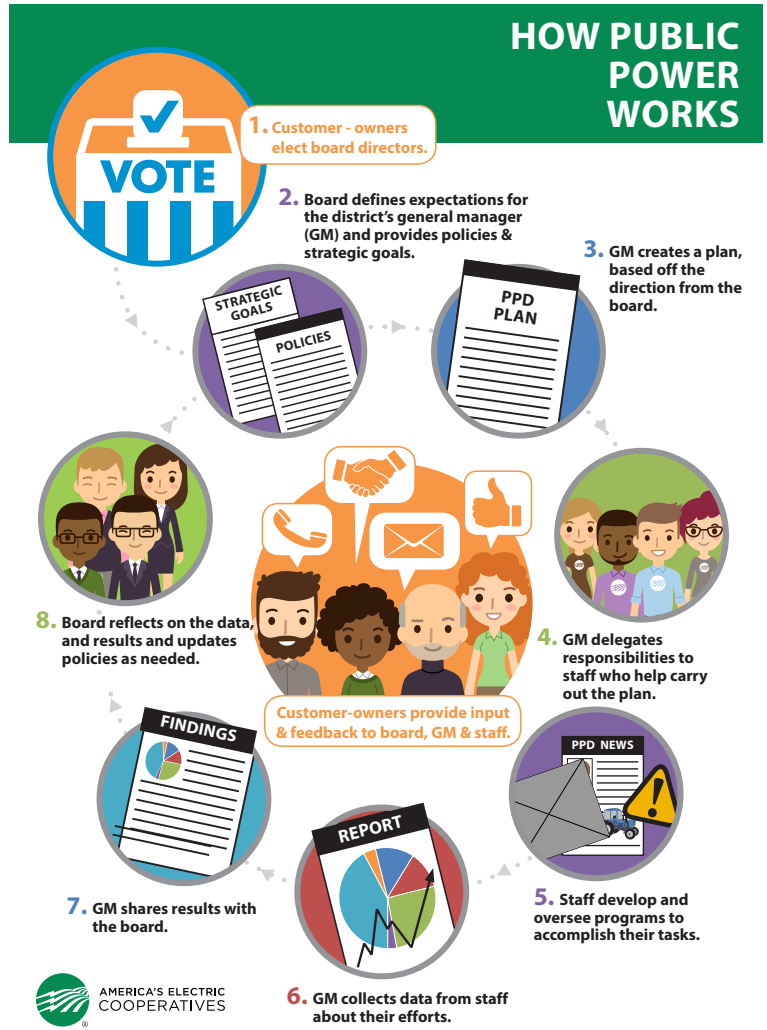
We congratulate Mark Miller, Sub-district I, Tim Means, Sub-district II, and Dave Hoefler, Sub-district III, who were all re-elected to the board for six-year terms.

George "Hunter" Frisch was elected for a two-year term to finish the Sub-district I open seat term.

Voting is an integral part of the public power model. As you can see from the graphic to the right, the public power process starts with you, our customer, taking the time to vote for your representatives on the board of directors.

It was reported by the AP Vote Cast (*AssociatedPress.com 11/5/2020*) that: "Among registered voters who chose not to cast a ballot in Nebraska, 22% said that was because they don't like politics generally, 19% said they don't know enough about the candidates' positions and 14% said their vote doesn't matter."

Your vote and voice matters to ERPPD. Local control means that the board of directors are customers like you, your neighbors, living and working in your communities, willing to take



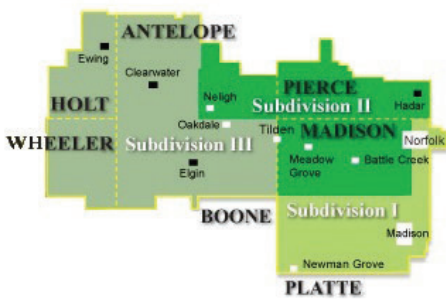
leadership roles and run for the board positions.

Because they live and work in your communities, they understand the effect rates, policies and infrastructure have on you, your families and business. They weigh the options they have to make good decisions for the district.

The newly re-elected board members along with the other five board members, Jerry Dolesh, Dennis Kuchar, Ray Payne, Joe Thiele, and Rod Zohner, and ERPPD staff, work hard to fulfill the mission to bring you safe, reliable, cost-effective electricity.



Hunter Frisch
Sub-district I



Mark Miller
Sub-district I



Tim Means
Sub-district II



Dave Hoefler
Sub-district III



10 Quick Tips to Avoid High Winter Bills

Looking to lower your bills this winter?
Use the 10 tips below to conserve energy.



Seal air leaks and insulate well to prevent heat from escaping and cold air from entering your home.



Reduce waste heat by installing a programmable thermostat.



Turn off lights when not in use.



Lower your water heater temperature. The Dept. of Energy recommends using the warm setting (120 degrees) during fall and winter months.



Unplug electronics like kitchen appliances and TVs when you're away.



Open blinds and curtains during the day to allow sunlight in to warm your home.



Close blinds and curtains at night to keep cold, drafty air out.



Use power strips for multiple appliances, and turn off the main switch when you're away from home.



Wash clothes in cold water, and use cold-water detergent whenever possible.



Replace incandescent light bulbs with LEDs, which use at least 75 percent less energy.

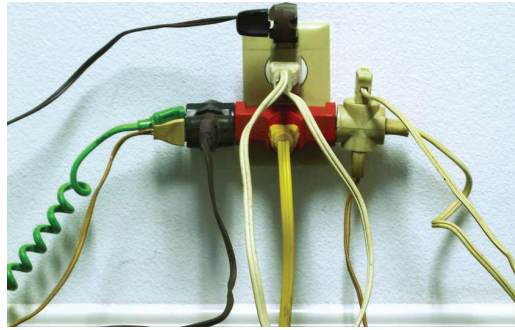
Source: U.S. Dept. of Energy

OUTLET SAFETY

Holidays mean decorations and lights throughout the house. Awareness is needed to make sure outlets don't become overloaded or that power strips or extension cords are used incorrectly.

An overloaded power outlet can cause a tripped circuit breaker, increase your risk for electrocution, or start a fire. You want to be mindful of how many things you are plugging in, and what they are.

According to the US National Fire Protection Association (NFPA), products that generate heat, such as hair dryers, space heaters, toasters or crock pots, should always be plugged directly into the electrical outlet. They pull too much power to safely use with a power strip or extension cord.



The Electrical Safety Foundation International and the NFPA both agree that temporary solutions, such as power strips and extension cords, should not be used long-term. The safest way to get access to more electricity in any part of your home is to hire an electrician to install new power outlets.

An electrician may install one of the styles of outlets below depending on location and type of use. Remember to test AFCIs

and GFCIs once a month according to the manufacturer's recommendations. If they do not work properly call your electrician.

Every year, U.S. fire departments respond to an estimated 25,900 home electrical fires. These fires cause an estimated 280 deaths, 1,125 injuries and 1.1 billion dollars in property loss. Thirty-nine percent of home electrical fires involve outlets and receptacles and other electrical wiring.

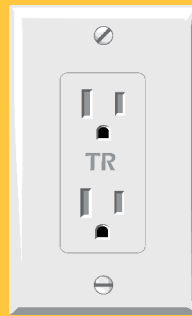
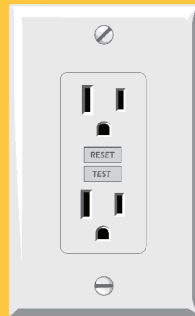
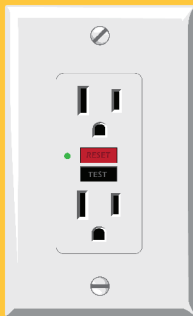
To ensure safety, you should only use about 80 percent of the available current for each electrical outlet in your home.

To determine if you are overloading your outlets, you can use the formula wattage divided by volts equals amps. Example: Let's say you are using 2,000 watts of power (for one outlet). Divide the watts by the volts in your home (typically 120) and you come up with 16.6 amps of current being used. With a 20 amp electrical outlet, you are using about 80 percent of the available current.

Be safe this holiday season and do not overload your outlets.

(Source: cnet.com "Don't have Enough Power Outlets: Here is What You Can Do. Sarah Mitroff, 6/17/18)

WATT'S THE DIFFERENCE?



Ground Fault Circuit Interrupter

Prevents electrical shock by detecting variations in current.

Install in areas where water and electricity are in close proximity.

Test outlets with GFCIs monthly; if they don't work properly, consult your electrician.

Arc Fault Circuit Interrupter

Prevents electrical fires caused by arc flash. Usually installed by an electrician.

An arc is an electrical discharge that can cause intense heat or light.

It interrupts the circuit when it detects an arc or other abnormalities in the flow of electricity.

Tamper Resistant Outlet

Prevents shocks caused by tampering with an outlet.

The protective shutters are designed to move when a plug is correctly inserted.

Became part of the National Electrical Code in 2008; if your home does not have these, install childproof devices.

