

THE WIRE

CURRENT NEWS FROM THE ELKHORN RURAL PUBLIC POWER DISTRICT

July 2009

Serving the Elkhorn River Valley since 1940

Volume 18, Number 7

Students to represent ERPPD at Youth Camp

Elkhorn Rural Public Power District will sponsor five area students to the 2009 Nebraska Rural Electric Association Youth Energy Camp. The event is held annually at the State 4-H Camp in the Nebraska National Forest west of Halsey, Neb. This year's camp will be July 13 through 17.

Those from the area attending will be: Eric Schiltmeyer of Elgin Pope John High School; Vitoria Wiese of Lindsay Holy Family; and Taylor Kester, Keely Odell, and Taylor

Pokorny all of Clearwater High School.

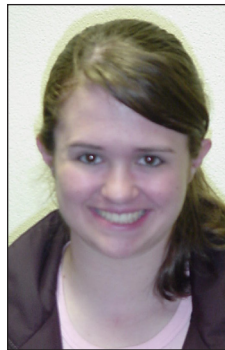
Campers are treated to educational sessions on electric safety, energy efficiency, and public power in Nebraska. They visit the Gerald Gentleman coal-fired generating facility near Sutherland, Neb., and the Kingsley hydroelectric station near Ogalalla, Neb. And they enjoy a great time with other high school students from across the state.



Eric Schiltmeyer



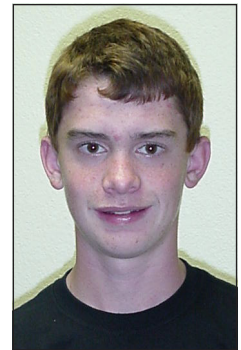
Vitoria Wiese



Taylor Kester



Keely Odell



Taylor Pokorny

Speak out about CO₂

Go to the Our Energy Our Future website to register your concerns about what carbon dioxide controls, like cap-and-trade, will do to electric bills.



Our Energy, Our Future

A Dialogue With America

Will we have the electricity we need in the future?

Start a dialogue with your elected officials at:

www.OurEnergy.coop

Q&A about the electric energy industry

Is there any way I can be sure that I am getting my electricity from renewable resources?

Electricity generated from any renewable resource is fed into the same electrical grid as the one that serves all the district's customers and brings power to your home. It is impossible to determine the difference between electrons, but the energy actually flowing into your home involves a mix generated by wind turbines, hydroelectric facilities, and biomass production, as well as coal-fired, nuclear, and natural gas facilities. Be assured that any renewable energy generated by your power supplier is actually put onto the grid and is a part of the mix that helps power your home. Elkhorn Rural Public Power District and other electric utilities in Nebraska support the development, construction, and operation of renewable energy projects.

Elkhorn Rural Public Power District
July 2009

Your Touchstone Energy® Partner 

WIRE
Page 1

ENERGY EFFICIENCY REBATES

Earn a rebate for installing an electric heat pump

How does a customer become eligible for a heat pump rebate?

A residential customer can:

1. Convert to a qualified air source heat pump; or Convert to a water source/geothermal heat pump;
2. Build new and install any qualified heat pump; or
3. Upgrade a lower-SEER heat pump to a qualified higher-SEER heat pump.

* *Replace an A/C unit with qualified heat pump and double the rebate.*

How does the residential customer get the rebate?

The heat pump installer must complete a verification form for a unit that meets the minimum standards (see box). Verification ensures that the new unit is operating within 10% of manufacturer specifications. The dealer must sign the form; the customer must sign it; then it must be submitted to Mark Gronau at ERPPD.

• *Rebates are available first-come, first-served until funds are exhausted.*

Air Source Heat Pump Rebates	New Unit	Replace A/C
Energy Star, 14 SEER, 8.2 HSPF	\$200	+ \$200
Energy Star, 15 SEER, 8.2 HSPF	\$250	+ \$250
Energy Star, 16 SEER or higher, 8.2 HSPF	\$300	+ \$300
Water Source or Geothermal Heat Pump Rebate		
Energy Star-qualified	\$400	+ \$400

Commercial, industrial lighting get efficiency rebates

4-Step To-Do List

1. Discuss potential C&I Lighting projects and guidelines (at right) with ERPPD's Mark Gronau and get an application form.

Call ERPPD at 800-675-2185.

2. Select a contractor; install any of the systems identified in the box below.

3. After installation, complete the application form.

4. Within 90 days of installation, submit the signed application (along with copies of the proof-of-purchase identified in the application's terms & conditions) to Elkhorn Rural Public Power.

Guidelines

- All replaced/retrofitted lighting equipment must be permanently installed.
- Only commercial and industrial customers qualify for the energy-efficient fluorescent fixture incentives.
- All incentives sought that are \$5,000 or greater require a pre- and post-installation inspection to be conducted by Elkhorn Rural PPD.
- An equal number of lighting fixtures will be impacted when compared to the number of fixtures considered for retrofit or replacement. Only existing lighting systems qualify for upgrade. New construction or addition of more light fixtures in a facility or in a facility addition do not qualify.
- Area lighting may be metered or unmetered, and area lighting may be customer-owned or utility-owned via a rental/lease agreement.
- *A custom program is available if these prescriptive measures don't apply. Call ERPPD for specific details.*
- *Rebates are available first-come, first-served until funds are exhausted.*

COMMERCIAL & INDUSTRIAL LIGHTING REBATES		Per fixture
What does the customer have now?	What is the customer changing to?	Rebate
<ul style="list-style-type: none"> • High Bay Lighting Replace Metal Halide fixture 	with Fluorescent High Bay fixture	\$50-\$75
<ul style="list-style-type: none"> • Exit Signs Replace or retrofit Incandescent Exit Sign 	with LED Exit Sign	\$20
<ul style="list-style-type: none"> • 4-ft Fluorescent Tube Lighting Replace or retrofit T12 fixture (w/ 2,3,4 lamps) 	with T8 and electronic ballast fixture	\$10-\$20
<ul style="list-style-type: none"> • 8-ft Fluorescent Tube Lighting Replace or retrofit any T12 fixture 	with T8 and electronic ballast fixture	\$15
<ul style="list-style-type: none"> • Area Security Lighting Replace Mercury Vapor lamp 	with comparable High Pressure Sodium	\$20-\$40

MORE ENERGY EFFICIENCY

Check out these energy efficiency programs for ERPPD customers

In the new economy of environmental concerns and high-cost generating facilities, energy efficiency is becoming more important than ever in terms of maintaining competitive rates and quality service. ERPPD is offering several energy efficiency programs for its customers. The new programs incorporate a mix of the district's wholesale supplier's programs with several of ERPPD's own programs for customers who want to control energy use in their homes and businesses.

Electric Water Heater Replacement

A water-heater replacement incentive is being offered to a residential customer who replaces a gas or propane water heater with an electric water heater (no tankless), the district will reimburse the customer up to 25 percent of the purchase price.

Replace A/C with Heat Pump

When a customer replaces an air conditioner (window unit or central system) with a qualified heat pump, ERPPD will match the existing heat pump rebate. This is a bonus incentive that ERPPD will add to the existing Heat Pump incentive (*WIRE-Page 2*). The new unit must meet equipment specifications. For example, a new 15-SEER heat pump normally receives \$250. If the heat pump replaces an A/C unit, the customer gets an added \$250. This incentive does not apply to new construction or heat pump-to-heat pump upgrades. ERPPD also continues to support NPPD's energy efficiency programs when those programs are a benefit to ERPPD customers.

Low-Interest Energy Loan

Qualification for this program is the same as for the Heat Pump incentive (the homeowner must install a 14 SEER unit with 8.2 HSPF or higher for this program). Customers can apply from their local lenders for a 2.5% low-interest loan for a qualified heat pump system. This loan is administered through the Nebraska Energy Office. *NOTE: Homeowners who apply for and receive the NEO loan cannot qualify for the ERPPD Heat Pump incentives.*

Residential Cooling System Tune-Up

A \$30 incentive is available for having a home's cooling system tuned-up. A homeowner may apply for the \$30 incentive once in three years. Application for the tune-up incentive includes a checklist to be signed by HVAC contractor and homeowner.

Commercial / Industrial Programs

- **Lights:** Prescriptive and custom incentives are based on what the customer installs and resulting energy savings.
- **Motors:** Incentives apply toward purchase of premium efficiency motors (1 to 200 HP).

- **Variable Frequency Drives:** VFDs can qualify for \$30 per horsepower for new applications on centrifugal loads. Call ERPPD before installing a VFD.

NOTE: If motors or VFDs qualify for irrigation efficiency incentives, they cannot qualify for incentives from these commercial and industrial programs.

Details about these programs, forms, and guidelines are available by calling ERPPD.

Call ERPPD at 800-675-2185 and ask Mark Gronau about efficiency.

ADVERTISEMENT

Back By Popular Demand

**JACO PICKS UP
YOUR OLD
FRIDGE AND
YOU PICK UP
35 BUCKS.**

\$35
REBATE
FOR YOUR OLD
REFRIGERATOR

SAVE
ENERGY
SAVE
MONEY
AND HELP
PROTECT THE
ENVIRONMENT



JACO
Environmental

Chances are, that old working refrigerator or freezer in your garage or basement is running up your electric bill. That's because they can use three times as much energy as newer ones. But now there's an easy solution. We'll pick up your older appliance for free and you'll pick up \$35 in cold cash when you recycle it. So do something good for yourself, good for the environment and lower your energy bills, too.

Call 1-866-444-9160 or visit www.appliancerecycling.com for a pickup and be sure to have your electric bill on hand.

Sponsored by Nebraska Public Power District in Partnership with its Wholesale Utility Customers

JACO Environmental, an appliance recycler, will pick up and recycle refrigerators and freezers that are in working condition. This program is seasonal and available to residential electric customers of NPPD and its wholesale utility customers on a first-come, first-served basis. The program is partially funded through the Waste Reduction and Recycling Incentive Grant Program, Nebraska Department of Environmental Quality. Customers must own the unit(s) being recycled. Limit two units per residential address.

IRRIGATION

Irrigator's switch number is important

This irrigation season, an ERPPD irrigator who has occasion to call the utility should reference the system's switch number when giving information.

While account number and location are necessary components, it is the switch number that will best help district personnel to provide the irrigator with the fastest resolution to his or her situation.

See illustration below for location examples.

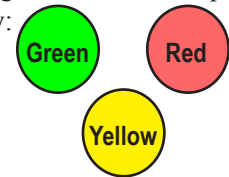


Lights have meaning

Three LED lights on the control box have particular significance.

- Red - No Control
- Red and Green - Control
- Yellow - Signal Test (has no effect)

The light configuration on the display appears this way:



If the lights are not working, please check the fuses before calling ERPPD's outage number at 800-675-2185.

**Call for ERPPD's
Load Control Status
during the season.
1-800-238-0185**

BOARD OF DIRECTORS
with Board position and subdivision

Rod Zohner
President.....II

Tim Means
Vice President ..II

Larry Lindahl
SecretaryIII

Dennis Kuchar
Treasurer I

Robert Kee
Director II

Mark Miller
Director I

Joe Thiele
DirectorIII

Greg Weidner
Director I

David Hoefler
DirectorIII

MANAGER
Tom Rudloff

**For Emergency Service
or Outage Reporting**
1-800-675-2185

After Hours Note:
The entire 800-number *must* be dialed,
even for a local call.

.....

• **Communicate Electronically** •

• **With ERPPD** •

• **Internet: www.erppd.com** •

• **E-mail: erppd@erppd.com** •

.....



**Know what's below.
Call before you dig.**

It's the law!
**Call 811 Before
You Dig!**
Or 1-800-331-5666
Diggers Hotline
of Nebraska

Outage Checklist

In the case of an outage:

- First check to see if the fuses below the meter are good.
- If you have breakers, make sure they are on and have not kicked out.
- If you have a double-throw switch for standby power, make sure it is in the correct position.
- Check with neighbors to see if they have power. By doing this before calling us, we can determine if it is a line or an individual outage. This can help cut down on outage duration.
- Please, be prepared to give the name on the account, plus the consumer number and/or the legal location. This will assist us in sending our crews to the correct place.

Questions about your bill?

Please call the ERPPD office at 402-675-2185 or toll-free, 1-800-675-2185, during office hours, 8 a.m.-4:30 p.m., in regards to billing questions. When calling the office concerning billing problems, it will save time if you would have your meter serial number or customer account number and current meter reading. Remember to call the Battle Creek office if you have billing questions. All account payments should be mailed to:

**Elkhorn Rural
Public Power
District
P.O. Box 310
Battle Creek, NE
68715**